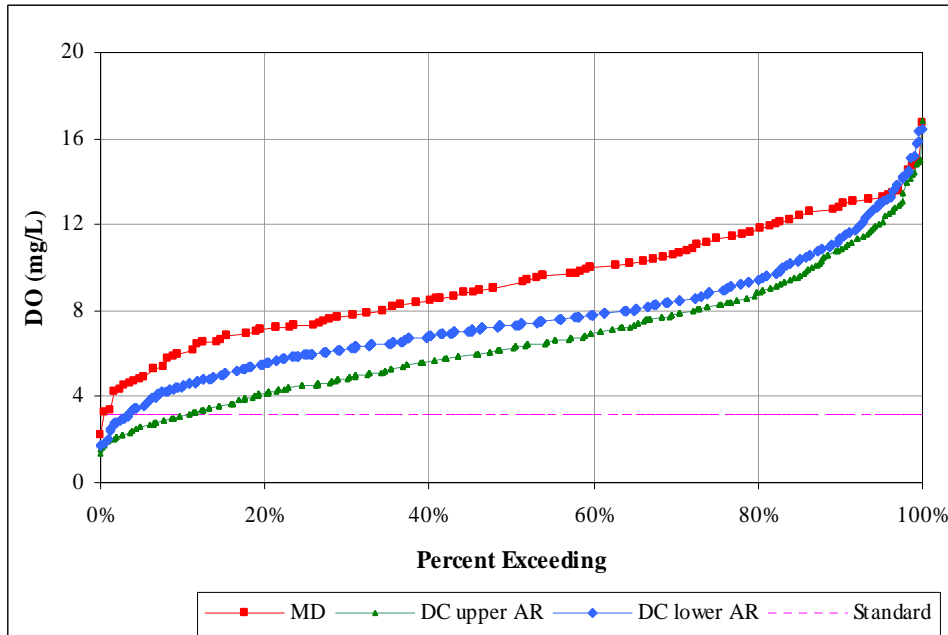
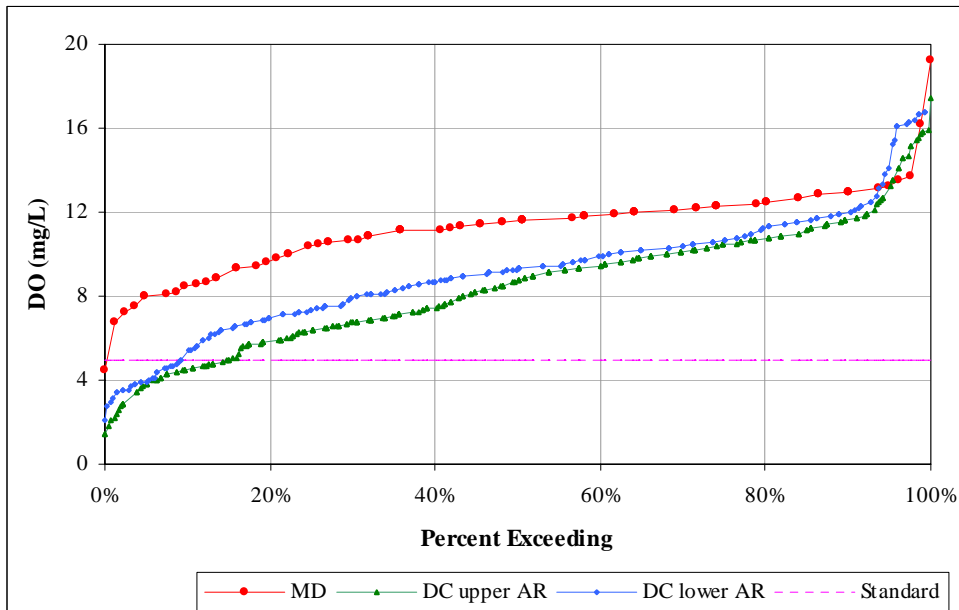


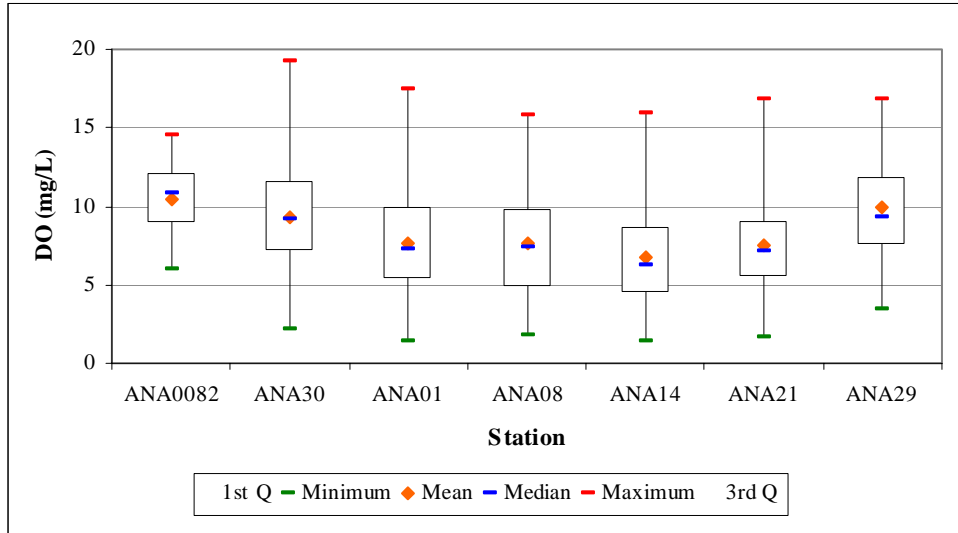
Appendix A – Additional Water Quality Analysis Figures



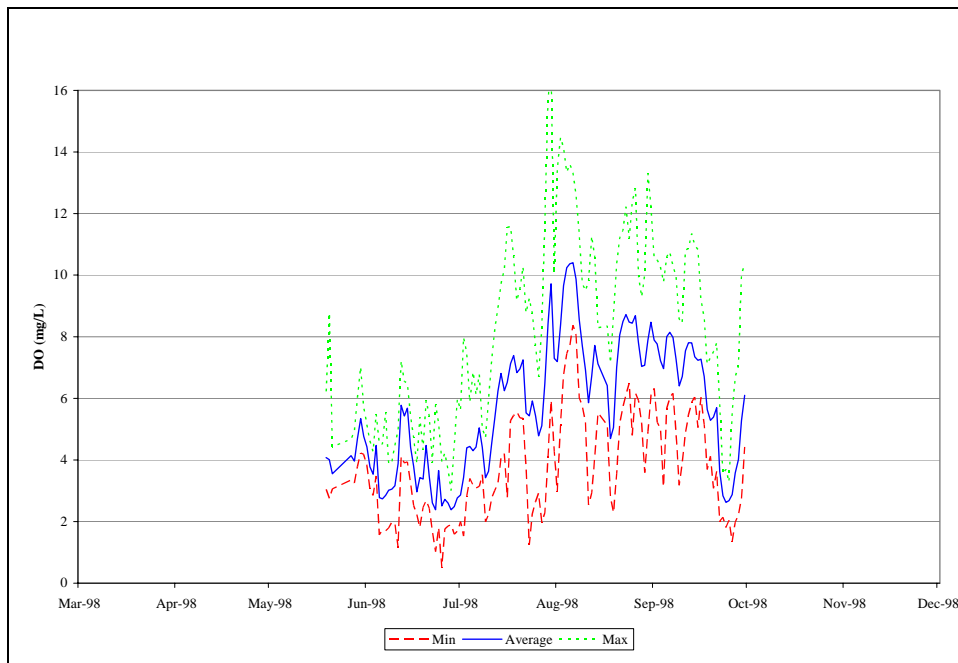
A.1. Cumulative Distribution of DO Concentrations, February – May, Tidal Anacostia River



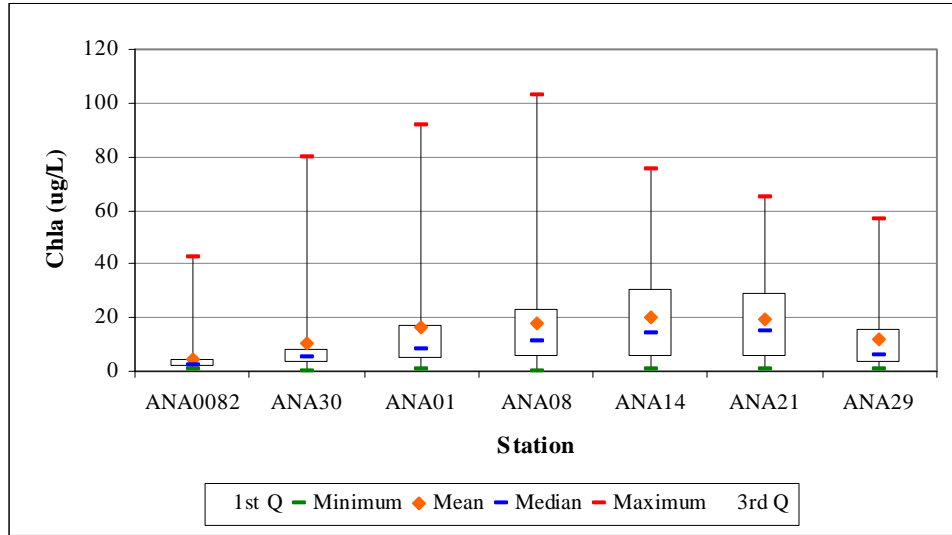
A.2. Cumulative Distribution of DO Concentrations, June – January, Tidal Anacostia River



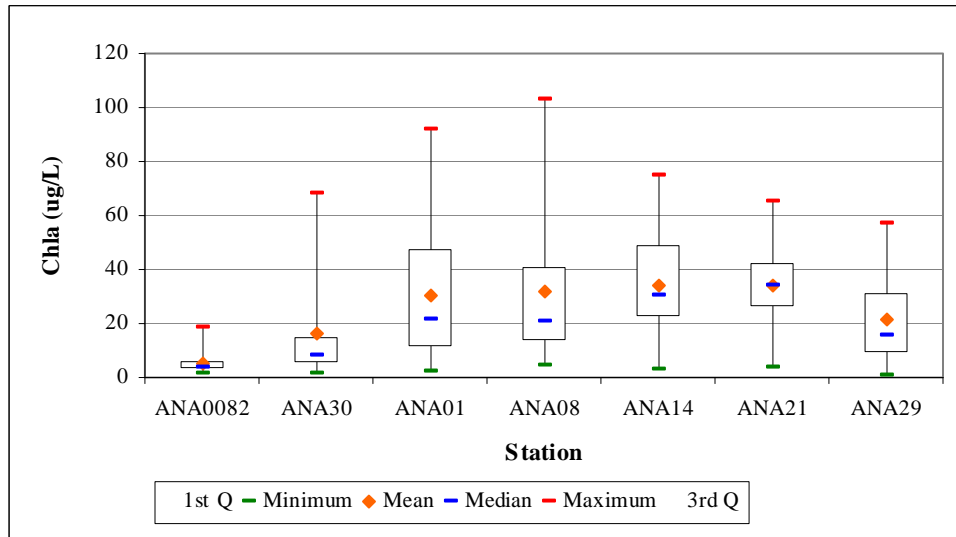
A.3. Distribution of DO Concentrations By Station, Tidal Anacostia River



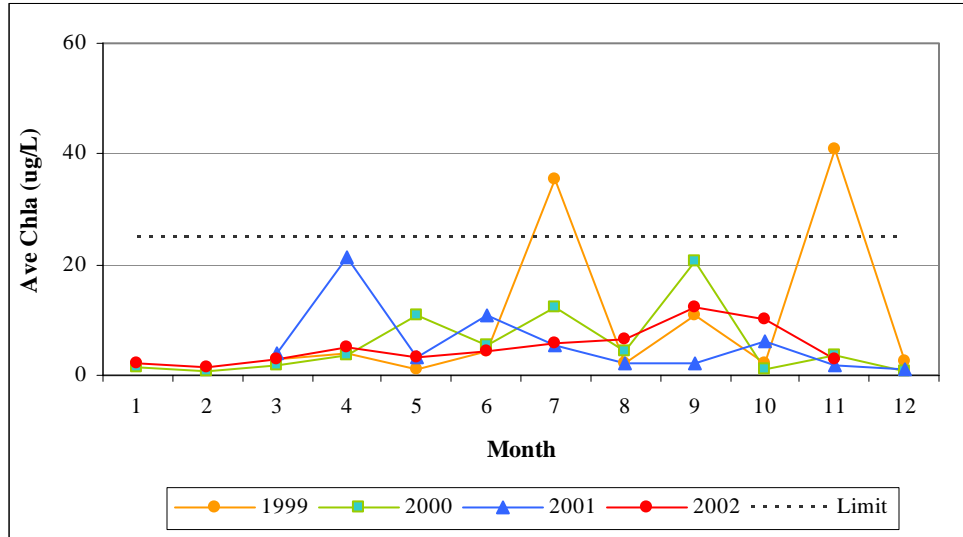
A.4. Observed Daily Minimum, Average, and Maximum DO Concentrations, Station PO4 at Benning Road Bridge, 1998



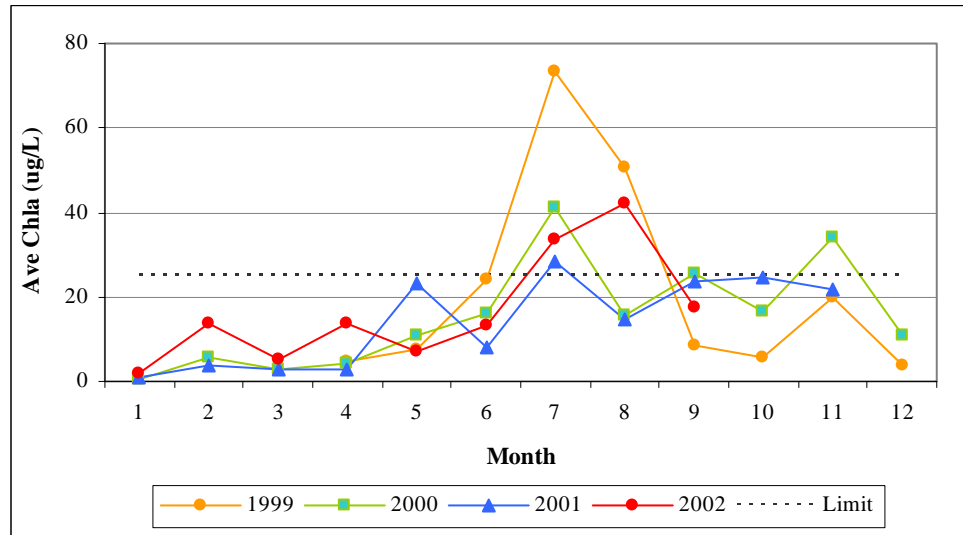
A.5. Annual Distribution of Chla Concentrations By Station, Tidal Anacostia River



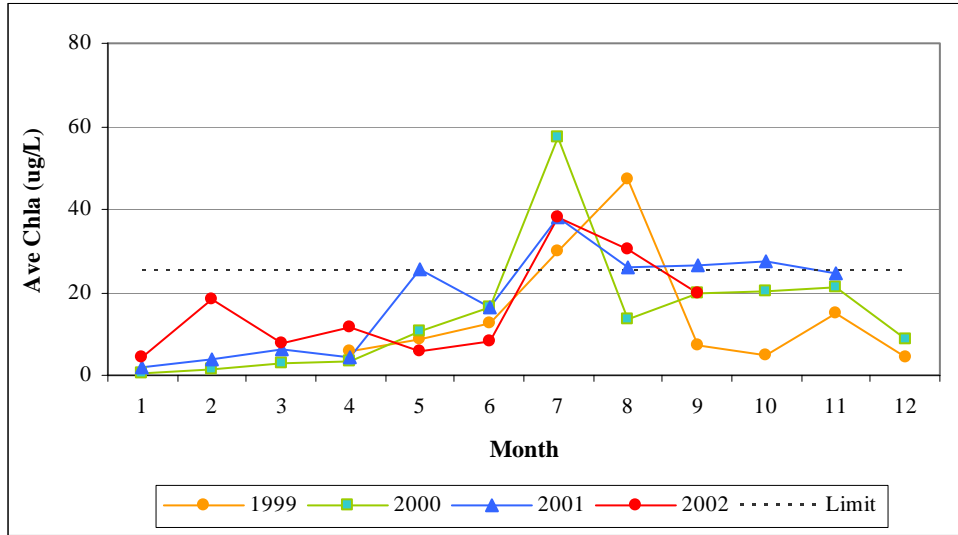
A.6. Distribution of Chla Concentrations By Station, July – September, Tidal Anacostia River



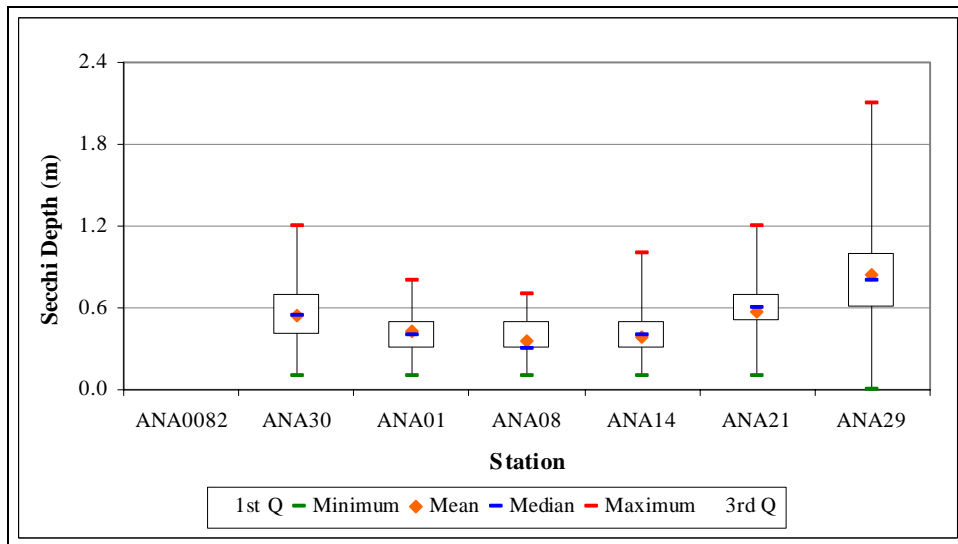
A.7. Monthly Average Chla Concentrations in MD Portion of Tidal Anacostia River



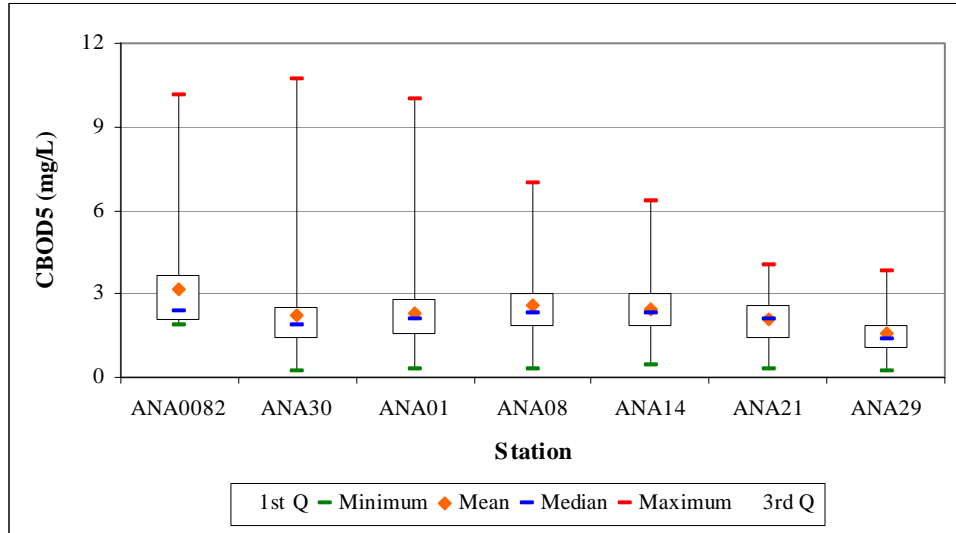
A.8. Monthly Average Chla Concentrations in DC Upper Tidal Anacostia River



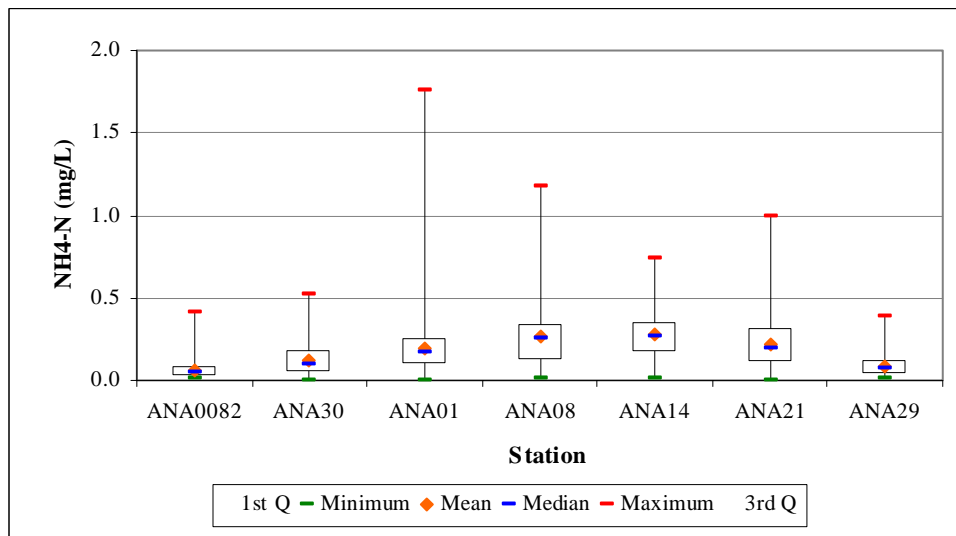
A.9. Monthly Average Chla Concentrations in DC Lower Tidal Anacostia River



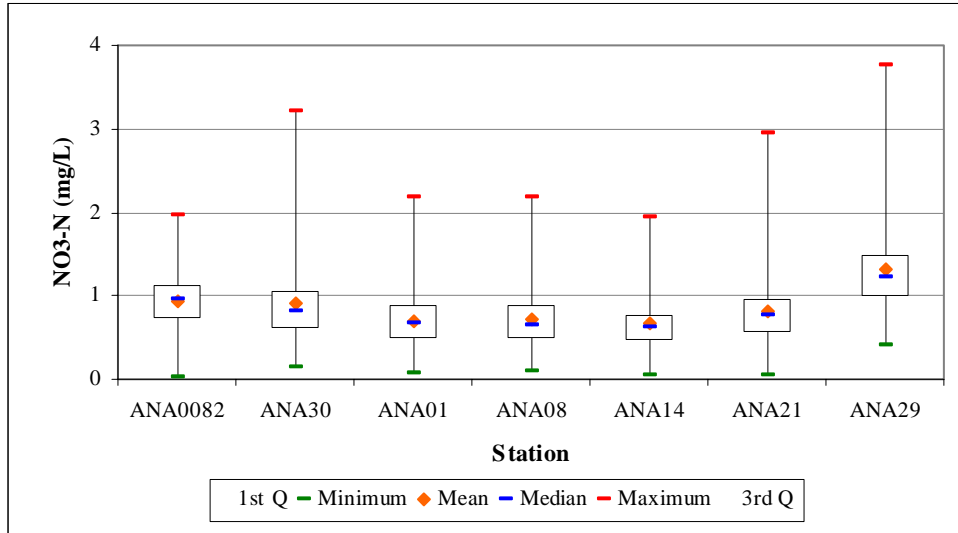
A.10. Distribution of Growing Season Secchi Depths By Station, Tidal Anacostia River



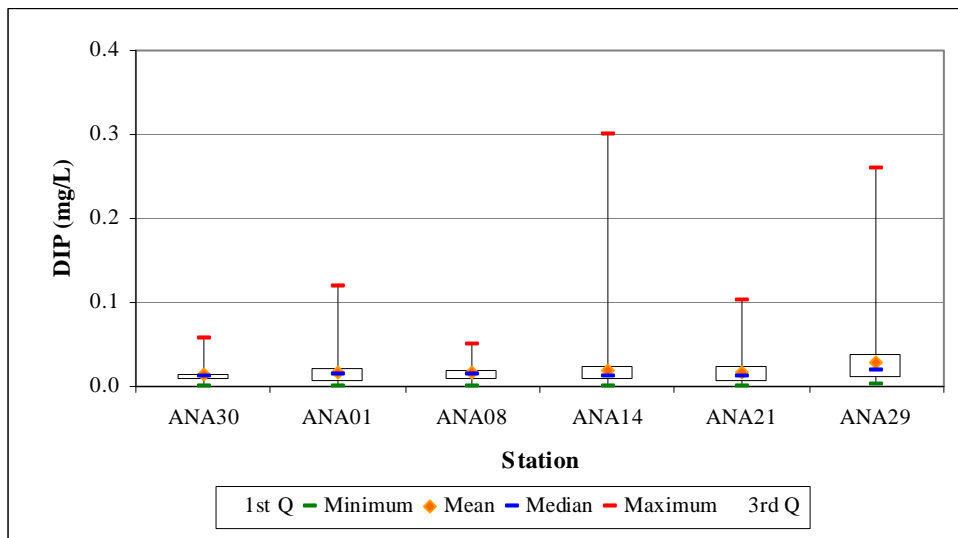
A.11. Distribution of BOD5 Concentrations By Station, Tidal Anacostia River



A.12 Distribution of NH4-N Concentrations By Station, Tidal Anacostia River



A.13. Distribution of NO3-N Concentrations By Station, Tidal Anacostia River



A.14. Distribution of Dissolved Inorganic Phosphate (DIP) Concentrations By Station, Tidal Anacostia River